

KNUQ/NUQ

MOFFETT FEDERAL AFLD

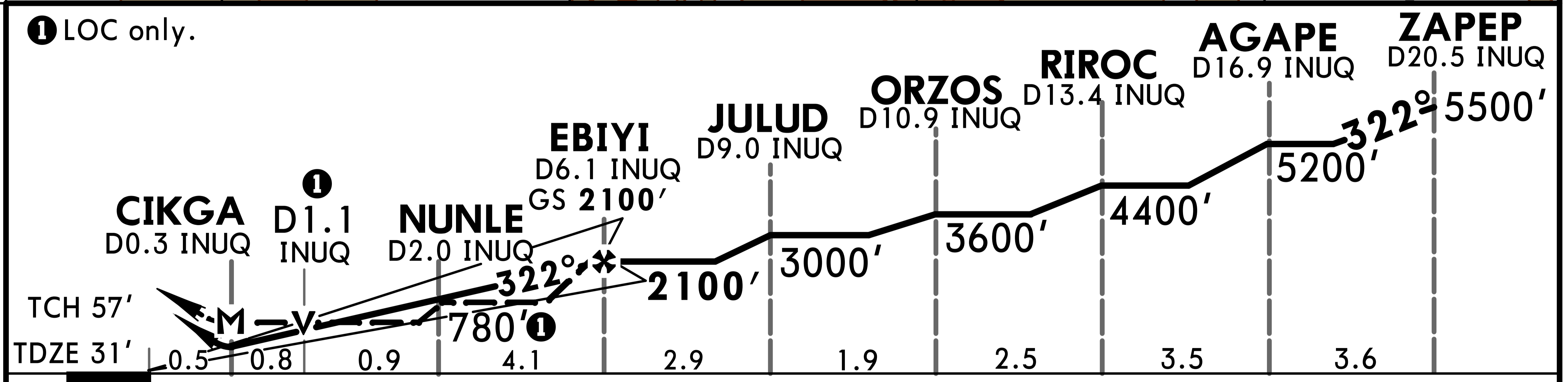
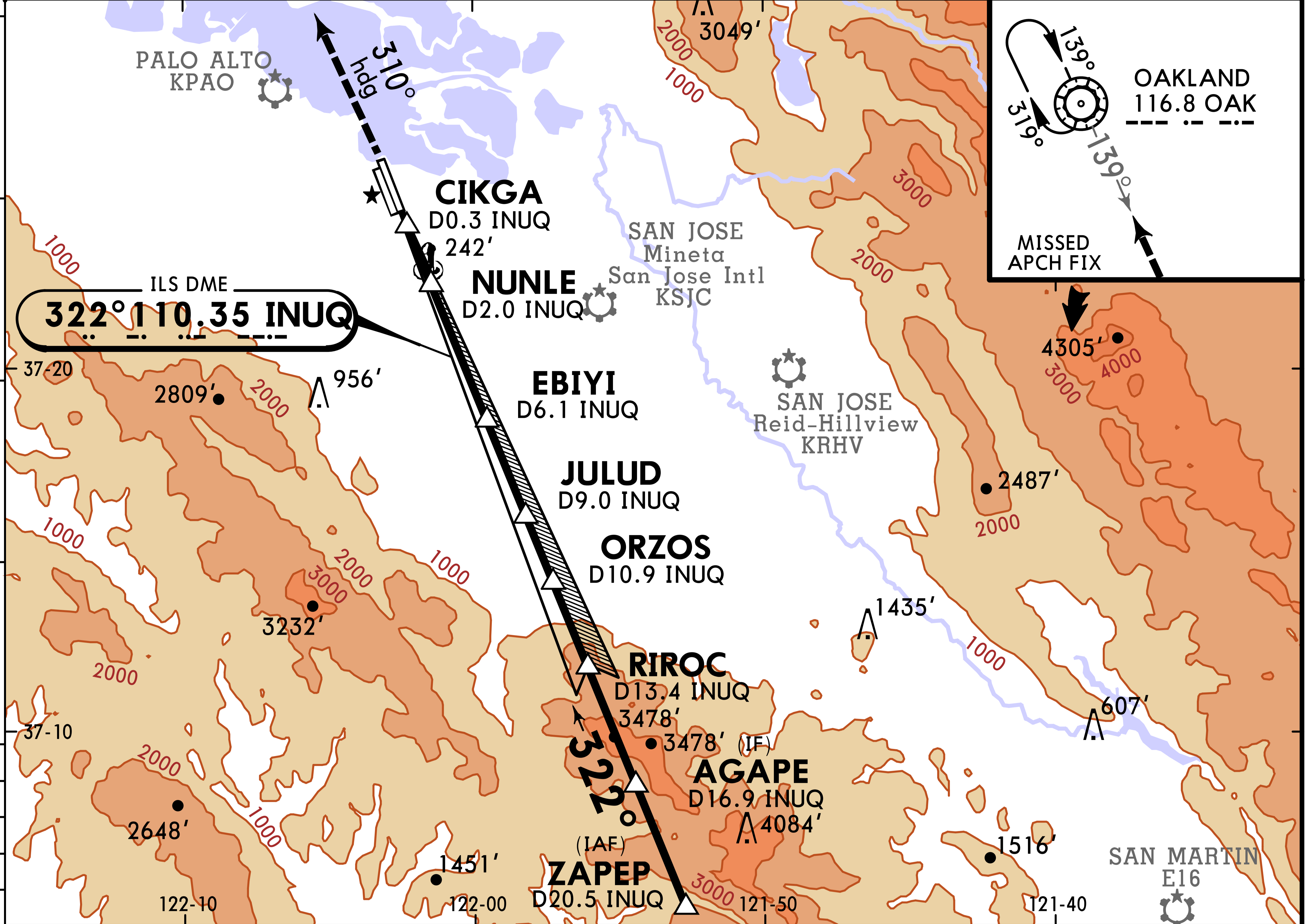
JEPPESEN
 21 JAN 22
 Eff 27 Jan (11-2)

MOUNTAIN VIEW, CALIF
ILS or LOC Rwy 32R

BRIEFING STRIP™

ATIS 124.175		NORCAL Approach (R) 120.1		*MOFFETT Tower CTAF 119.55		*Ground 121.85		
LOC INUQ 110.35	Final Apch Crs 322°	EBIYI 2100' (2069')	ILS DA(H) 231' (200')	Apt Elev 37' TDZE 31'		<div style="border: 1px solid black; border-radius: 50%; width: 100px; height: 100px; display: flex; align-items: center; justify-content: center; margin: 0 auto;">5600</div> <p>MSA SJC VOR</p>		
MISSED APCH: Climb to 600' then climbing LEFT turn to 4000' on heading 310° and inbound on OAK VOR R-139 to OAK VOR and hold.								
Alt Set: INCHES		Trans level: FL 180		Trans alt: 18000'				
1. DME required. 2. Radar required for procedure entry. 3. Pilot controlled lighting 119.55.								

TERPS AMEND 2 5 DEC 2019



Gnd speed-Kts	70	90	100	120	140	160	MALSR PAPI 600' 4000' 310° hdg
GS	3.00°	372	478	531	637	849	
MAP at CIKGA							

	STRAIGHT-IN LANDING RWY 32R				CIRCLE-TO-LAND
	ILS		LOC (GS out)		
	DA(H) 231' (200')		MDA(H) 500' (469')		Max Kts MDA(H)
	FULL	RAIL/ALS out	RAIL/ALS out		
A			1/2	1	90 540' (503') - 1
B					120 600' (563') - 1
C	1/2	3/4		1 3/8	140 620' (583') - 1 1/2
D			1		165 780' (743') - 2 1/2